



2 Bear Yard Mews, Bristol, BS8 4SD

www.hydes.co.uk



2 Bear Yard Mews, Bristol, BS8 4SD

An attractive 3/4-bedroom, terraced mews house, tucked away in a hidden enclave of Hotwells, with the benefit of two off street parking spaces.

One of six similar modern town houses built by the renowned and respected homebuilder, Charles Church Homes in 2004, the house has been extensively modernized to a high standard throughout, with flexible accommodation arranged over four floors. Furthermore, the ground floor accommodation enjoys a secondary entrance, thereby allowing the ability to provide self-contained living / Airbnb accommodation if required.



4



1



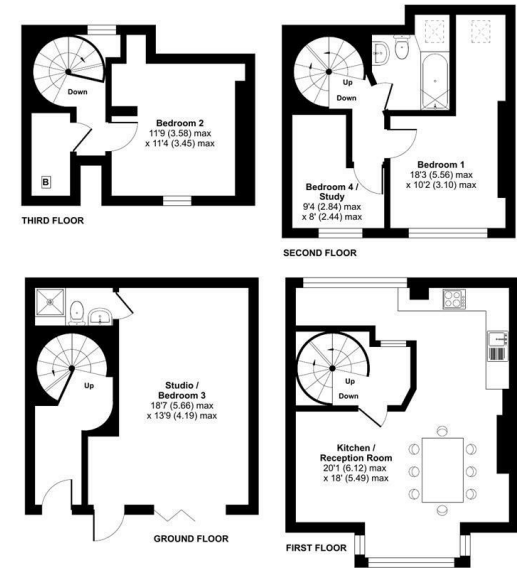
2



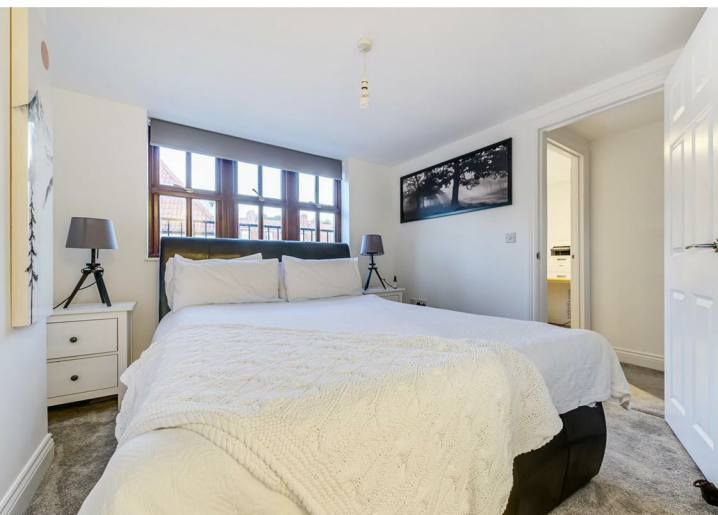
Bear Yard Mews, Bristol, BS8

Approximate Area = 1264 sq ft / 117 sq m

For identification only - Not to scale



 Certified Property Measurer
Floor plan produced in accordance with RICS Property Measurement Standards incorporating International Property Measurement Standards (IPMS Residential) - Groundroom 0022.
Produced for Hydes of Bristol. REF: B06234





Energy Efficiency Rating		
	Current	Potential
Very energy efficient - lower running costs		
(92 plus) A		
(81-91) B		
(69-80) C		
(55-68) D		
(39-54) E		
(21-38) F		
(1-20) G		
Not energy efficient - higher running costs		
	74	86
England & Wales	EU Directive 2002/91/EC	

Environmental Impact (CO ₂) Rating		
	Current	Potential
Very environmentally friendly - lower CO ₂ emissions		
(92 plus) A		
(81-91) B		
(69-80) C		
(55-68) D		
(39-54) E		
(21-38) F		
(1-20) G		
Not environmentally friendly - higher CO ₂ emissions		
England & Wales	EU Directive 2002/91/EC	

OTHER INFORMATION



28 Princess Victoria Street, Bristol, BS8 4BU
 Tel: 0117 973 1516
 post@hydes.co.uk | www.hydes.co.uk

IMPORTANT NOTE

Hydes Of Bristol and any joint agents give notice that (i) they have no authority to make or give representations or warranties in relation to the property. These particulars do not form part of any offer or contract and must not be relied upon as statements or representations of fact. (ii) Any areas, distances or measurements are approximate. The text, photographs and plans are for guidance only and are not necessarily comprehensive. It should not be assumed that the property has all the necessary planning, building regulations or other consents and Hydes Of Bristol have not tested any services, equipment or facilities. Purchasers must satisfy themselves by inspection or otherwise. (iii) In accordance with the consumer protection from unfair trading regulations, please note that the working condition of these services, or kitchen appliances has not been checked by the Agents but at the time of taking particulars we were informed that all were in working order. Please also note that current government legislation demands that as selling agents for this property, Hydes Of Bristol require written evidence of the origin/source of finance for funding for any prospective purchaser wishing to purchase this property. This confirmation shall be required prior to the vendor entering into any contract of sale and our instructions from the vendor are to this effect.